

BIM

(BUILDING INFORMATION MODELLING)

BUILDING A SAFE INFRASTRUCTURE FOR YOUR PEACE OF MIND

The reason why we are so sure about the solid foundations of Eminence, is because it has already been tried and tested! Eminence has been built using BIM Technology. Building Information Modelling (BIM) is an intelligent 3-D modelling based process that equips architecture, engineering and construction professionals with the insight and tools to more efficiently plan, design, construct and manage buildings and infrastructure.

The advantages of BIM:

- Its use helps prepare a bill of quantity
- Helps give cost estimates and therefore helps better the project management
- Modelling the built structure in virtual reality ensures minimum errors on site
 - Central registry of all building components are available in 3D

BIM
ENABLED





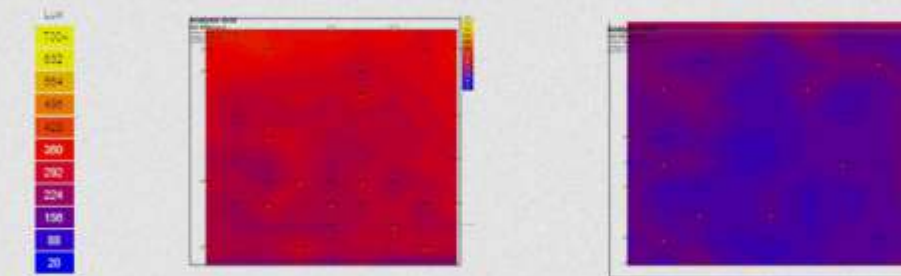
LUMINANCE STUDY

TO ENSURE YOU HAVE
AN SUPPLY OF
ADEQUATE NATURAL LIGHT

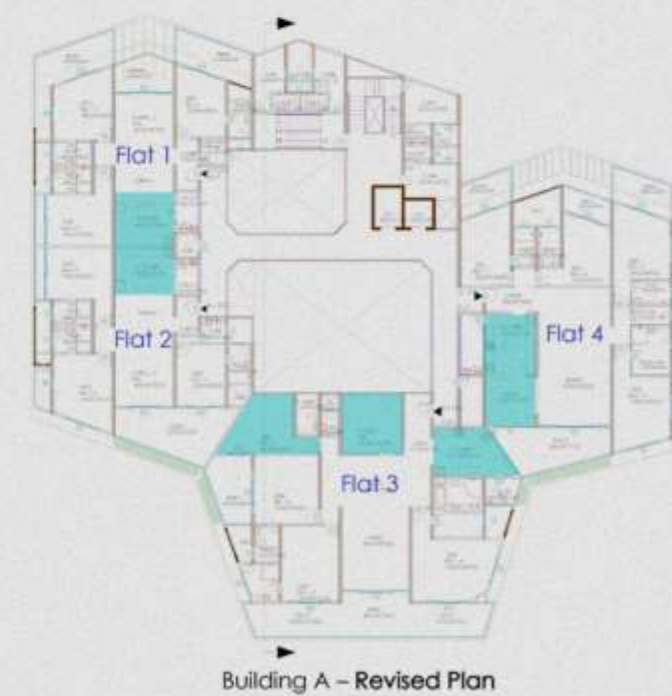
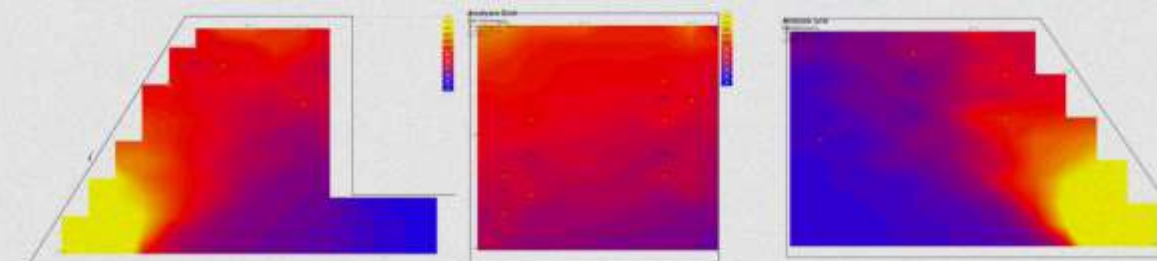
Our in-depth luminance studies have helped us to design each room in such a way that it receives the maximum amount of natural light that it can. The Luminance Project ensures that you receive an abundance of natural light whenever possible and opens up your home to positivity.

This is a study of the 1st floor flats:

The kitchen requires a standard 200 lux
and the family room requires a standard
50 lux



The bedrooms require 50 lux
and recieves around 100%
daylight.



ROOMS, ACOUSTICALLY ENGINEERED



Weatherproof and age resistant glass sealing

Double glazed insulation

Noise Insulation

Optimum stability through thick-side profiles

Internal beeding for high security and glazing

Energy retaining multi chamber frame

All condition doube seal system



REHAU door and window systems enable you to enjoy peace and quiet .
Used with doubleglazed sealed units, they can easily halve outdoor noise levels.Heat and energy-saving technology
Much of the heat loss from a building occurs through glazing. REHAU
Tritec's special three-chamber design enables your home to enjoy great-
er thermal efficiency. and help to conserve the environment too.
Reduce outdoor noise

Greater household protection
Tough and durable designs help reduce break-ins. They comply with the
BS7950 and PAS 23/24 window and door security standards and feature
strengthened areas where locking mechanisms are to be fitted, to help
protect both you and your property.

Water,
simply
connected.

With an in depth range of products and systems, Geberit provides innovative solutions for most sanitary applications. Once installed, many Geberit products remain invisible to the end user. They fulfil their function for decades thanks to their high level of quality and reliability. Geberit is one of the most respected and esteemed brands in the field of sanitary technology. From the connection to the water supply through to the distribution channels to all of the floors and the houses, all the way to the drainage of roofs and buildings into the public sewage system, Geberit systems are known for their high efficiency. With Geberit, the aim is to provide customers with state-of-the-art technological solutions with respect to hydraulics, fireprotection and sound insulation, reliability and environmental properties.



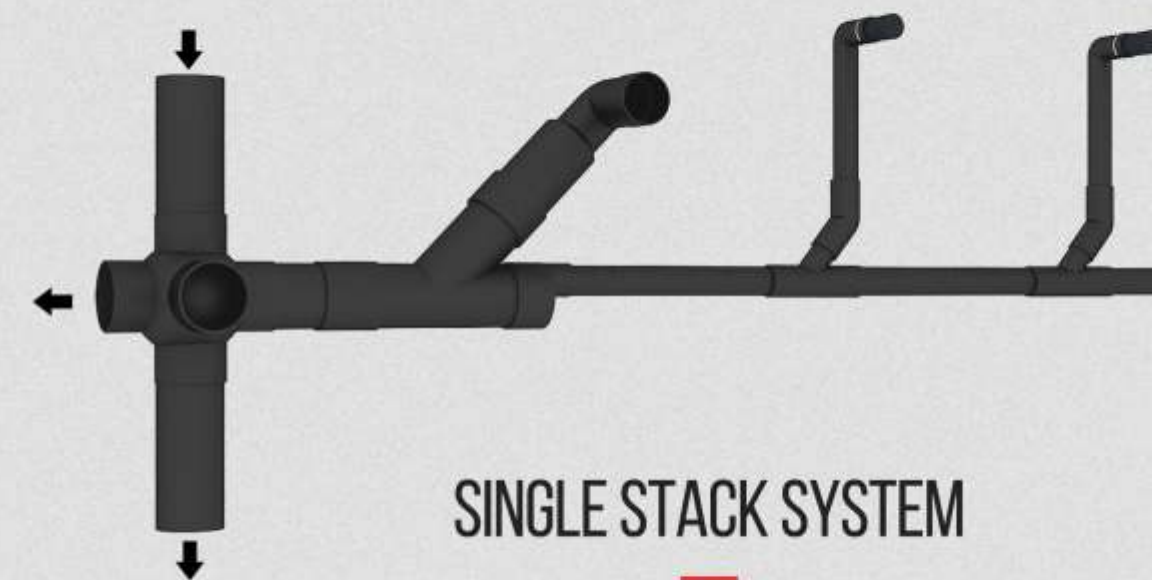
ELECTRO FUSION WELDING

Electrofusion sleeve coupling is a easy & leak proof welding process that fuses the material with adjoining pipe seamlessly in order to combine the elements in one mono form. The result is a lightweight and durable construction with increased shelf life when compared to conventional solutions. It is resistant to roughly 95 percent of all common household alkalis, acids and chemicals. The pipes and fittings can also withstand shocks, lowering, knocks or pressure up to 1.5 bar without breakage or lasting deformation.



HDPE

The polyethylene (PE) used by Geberit contains special additives which provide effective protection against UV radiation. At normal room temperatures, Geberit HDPE pipes are virtually indestructible. The tough material is shockproof even at temperatures of -40°C . Especially during the building phase, this robustness ensures that the pipelines remain intact despite any mechanical influences.



SINGLE STACK SYSTEM

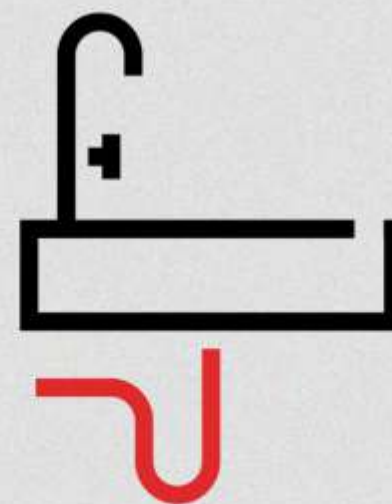
The Ball Joint System is an engineered single stack drainage system that offers the industry its first major change in many years. It incorporates a different concept of waste and venting by slowing the velocity of the liquids and solids. It uses aerator fittings at each floor where soil and waste branches enter the stack and deaerator fittings are at the base. By incorporating these into a single multi-story stack the volume of the drainage is greatly increased over the standard two stack waste and vent system. This fitting is designed to assure a smooth drainage flow from the vertical stack into the horizontal drain. The loop in the pressure relief line accommodates "hydraulic jump" that occurs at the base of the stack, making it a reliable, efficient and the best technical solution available today.



KOHLER®

BATHROOMS

ARDEX WPM 1000 Weldable Waterproofing Membrane is a versatile rubber membrane that can be heat welded. It is suitable for waterproofing underground tanking, roofs, decks and tiles. ARDEX WPM 1000 is made up of synthetic rubber with properties which resist ageing from heat, sunlight and ozone and is heat weldable.



PEX piping

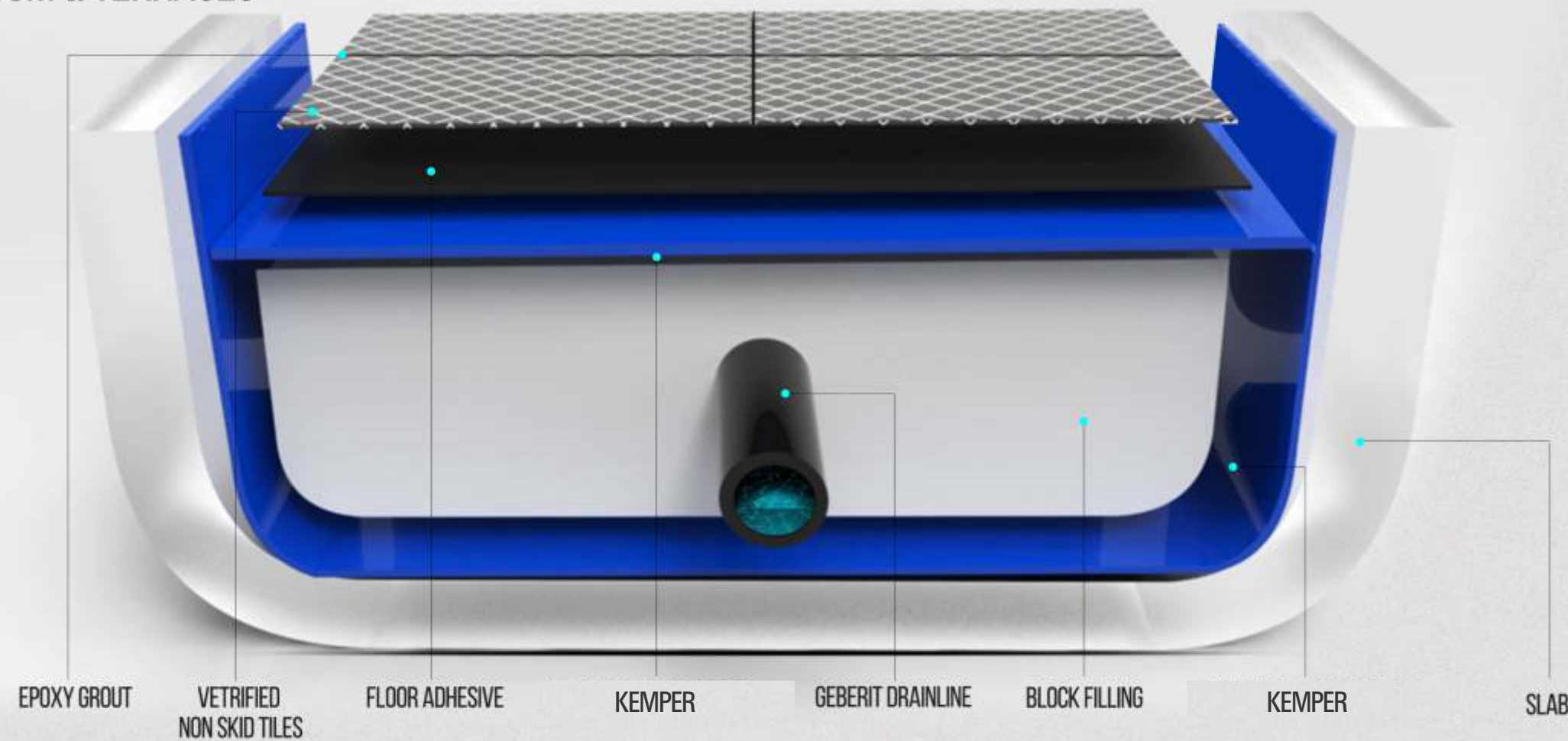
ADVANCED TUBING SYSTEM

ARDEX WPM 1000 Weldable Waterproofing Membrane is a versatile rubber membrane that can be heat welded. It is suitable for waterproofing underground tanking, roofs, decks and tiles. ARDEX WPM 1000 is made up of synthetic rubber with properties which resist ageing from heat, sunlight and ozone and is heat weldable.



THE NEW AGE WATERPROOFING SYSTEM

BATHROOM & TERRACES



KERAKOLL® AQUASTOP SYSTEM is the state-of-the-art waterproofing solution which we have implemented for washrooms & terraces , where ceramic tiles, natural stone and glass mosaic are to be laid.

- Certified, eco friendly, breathable, anti-alkali and chlorine-resistant, it provides a mineral membrane which acts like a flexible waterproofing coat which has high levels of adhesion and durability .
- Its **DOUBLE LAYER** single-component material will ensure **2X PROTECTION** and gurantee that the buliding structure will remain resistant to the damage done by water for years to come.

10 year company warranty

PODIUM & ROOFTOP

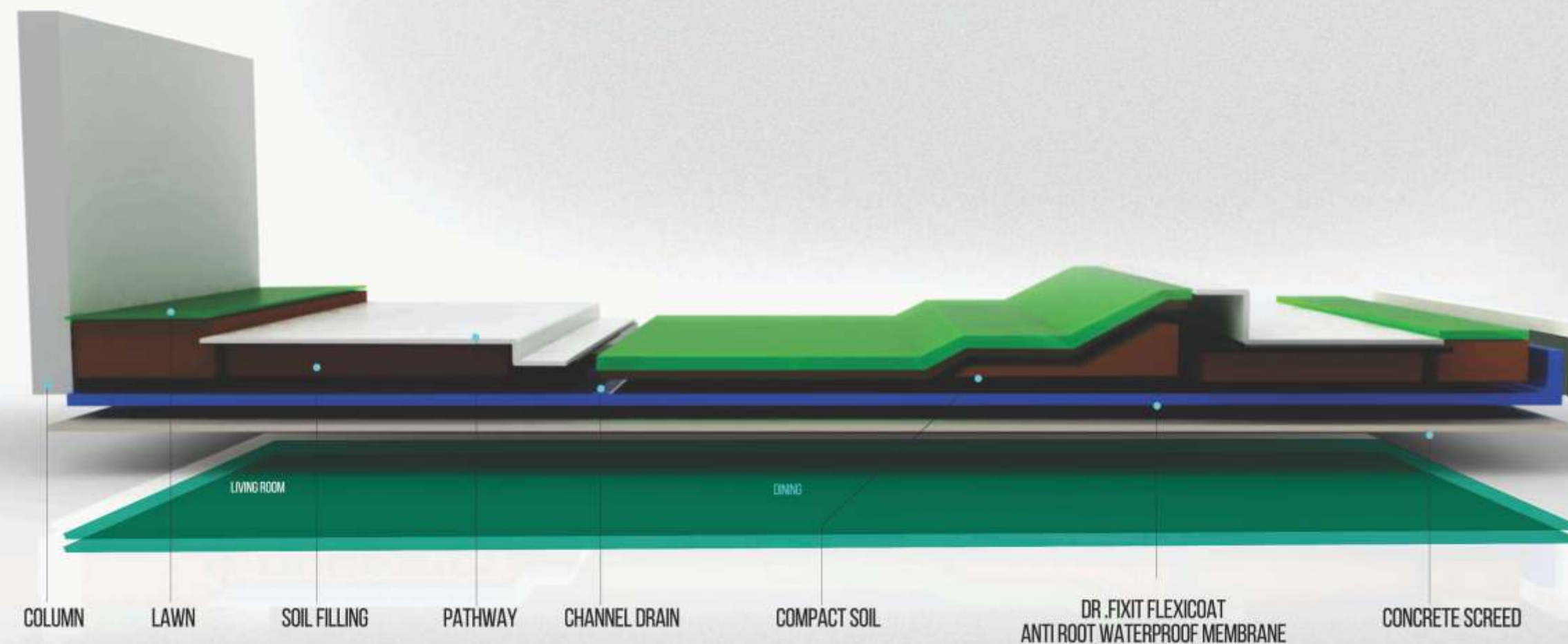
asianpaints **PROTEK DURALIFE**

Asian Paints Protek Duralife is an ultra durable state of the art exterior emulsion paint formulated with engineered synergy of pure acrylic latex based on nanotechnology and core shell modified silicone.

It comes with 15 year performance warranty which includes a 10 year waterproofing and anti algal warranty.
Effective Waterproofing- The superlative waterproofing capabilities of the Ultima Protek Duralife system forms an effective barrier against water penetration.

Crack Bridging- The film has significantly higher elongation and comes with unique fibre reinforcement thereby offering a unique crack bridging ability of upto 2 mm

Binder -Silicone-acrylic binder | System - twin component(base coat +top coat) | Application system 2 coats of base coat +2 coats of top coat
Water proofing property - Very good water proofing property(Stops water ingress up to 8 bar hydrostatic pressure)
DFT(Dry film thickness) - 250 microns | Crack bridging ability Upto 2mm | Shade retention - 15 years
Anti- algal performance - Providing 10 years warranty(Advance bio pack) | sheen - Up to 20-24 at 60 deg GH
Anti carbonation R value > 300 for anti-carbonation coating | Warranty - 10 years performance warranty(anti peeling +shade retention)
+ 10 years anti algal and water proofing warranty | Cleanability Self-cleaning property (1st time ever in India)



FLEXICOAT PU

Dr. Fixit Flexicoat PU is our preferred choice for waterproofing the building rooftop and the podium. It is a single component, pitch modified polyurethane, liquid applied coating that is composed of specially developed polymers, properly selected along with graded fillers. It cures by reacting with atmospheric moisture to give a tough elastomeric waterproof membrane.

This application secures the structure from water leaks in any given scenario. Which assures maximum security and the building remains impenetrable from any liquid components from external conditions.